



**SCI ENGINEERING, INC.**

**EARTH • SCIENCE • SOLUTIONS**

GEOTECHNICAL  
ENVIRONMENTAL  
NATURAL RESOURCES  
CULTURAL RESOURCES  
CONSTRUCTION SERVICES

July 25, 2023

Elliot Reed  
Cochran Engineering  
530A East Independence Drive  
Union, Missouri 63084

RE: Results of a Phase One Cultural Resource Survey  
Oldenburg Industrial Park  
Franklin County, Missouri  
SCI No. 2023-0505.40

Dear Elliot Reed:

SCI Engineering, Inc. (SCI) has completed the Phase One Cultural Resource Survey (Phase One) for the above-referenced site, the report of which is contained herein. Field investigations within the project area identified two new cultural resources. The two cultural resources consist of pre-contact isolated finds that do not warrant site designation in the State of Missouri. It is SCI's opinion that further work is unwarranted and recommends clearance of the project area for the proposed industrial park.

SCI appreciates being of service to you on this project. Please contact me if you have any questions or comments regarding this report.

Respectfully,

**SCI ENGINEERING, INC.**

A handwritten signature in black ink that reads "Jacob Province".

Jacob Province  
Archaeologist

A handwritten signature in black ink that reads "Bryan Carlo".

Bryan M. Carlo, MA  
Senior Archaeologist

JP/BMC/rah

Enclosures

- Appendix A – Figures
- Appendix B – Photographic documentation
- Appendix C – Shovel Test Results
- Appendix D – MoDNR Site Forms
- Appendix E – MoDNR Correspondence

N:\Projects\2023\2023-0505 Oldenburg Industrial Park\CR\Report\Oldenburg Industrial Park Phase One CRS (AutoRecovered).docx

*Public disclosure of site locations reported herein is prohibited by 16 USC 470W-3*

SECTION 106 SURVEY MEMO  
Missouri Department of Natural Resources  
Historic Preservation Program  
P.O. Box 176  
Jefferson City, Missouri 65102-0176  
(573) 751-7858

1) SHPO 106 Project # 008-FR-23

REVIEWER: \_\_\_\_\_

Date: \_\_\_\_\_

Accepted Rejected

SHPO USE ONLY

Locational Information and Survey Conditions

2) County (s): Franklin

3) Quadrangle: Washington West, MO 7.5' (Figures 1 and 2) 4) Project Type/Title: Oldenburg Industrial Park

5) Funding and/or Permitting Federal/State Agencies: United States Economic Development Administration

6) Section: 18 7) Township: 44 N 8) Range: 1 W

9) U.T.M.: Z 15 S 667527 E--4270210 N

10) Project Description: The project area is the proposed location for a new industrial and commercial development. Project plans are available (Figure 3).

11) Topography: The project area consists of sloping terrain that has been modified by terracing.

12) Soils: Menfro silt loam, 5 to 9 percent slopes, eroded; Menfro silt loam, 9 to 14 percent slopes, eroded; Haymond silt loam, 0 to 3 percent slopes, frequently flooded; Hartville silt loam, 1 to 3 percent slopes

13) Drainage: East Missouri (Figure 4)

14) Land Use/Ground Cover (Include Percent Visibility): The project area consists of agricultural fields under new growth soybean and winter wheat. A small portion of the project area consists of freshly plowed field. The new growth soybean and wheat fields yield approximately 40 percent ground surface visibility. The freshly plowed field yielded nearly 100 percent ground surface visibility.

15) Survey Limitations: None

Historical Background Information

16) HPP – Cultural Resource Inventory 17) Archaeological Survey of Missouri 18) GIS Database X

19) Historic Plats/Atlases/Sources: 1853 GLO map of Township 44 N Range 1 W (Figure 5); 1878 Atlas of Franklin County, MO (Figure 6); 1890 Hermann, MO 15' USGS Topographic Quadrangle (Figure 7); 1898 Atlas of Franklin County, MO (Figure 8); 1919 Atlas of Franklin County, MO (Figure 9); 1948 Washington West, MO 15' USGS Topographic Quadrangle (Figure 10); 1973 Washington West, MO 7.5' USGS Topographic Quadrangle (Figure 11); 2012 Washington West, MO 7.5' USGS Topographic Quadrangle (Figure 12); 2017 Washington West, MO 7.5' USGS Topographic Quadrangle (Figure 13); 2021 Washington West, MO 7.5' USGS Topographic Quadrangle (Figure 14).

20) Previously Reported Sites: None within project area. Seven are recorded within a one-mile radius: 23FR479, 480, 481, 482, 483, 485, 1588.

21) Previous Surveys: None within the project area. Three previous surveys within a one-mile radius: FR-82, 135, 296.

22) Regional Sources Utilized: MDNR Site File Database Consulted 6/5/23

23) Master Plan Recommendations: The Master Plan makes no recommendations.

24) Investigation Techniques: Pedestrian survey at 5-meter intervals. Limited shovel tests placed to observe subsurface conditions.

25) Time Expended: 30 person hours

26) Sites Located: Two pre-contact isolated finds (IF1 and IF2)

27) Cultural Materials: See Comments

28) Curated at University of Missouri - Columbia

29) Collection Techniques: Cultural material greater than 50 years of age was collected.

30) Area Surveyed (Acres & Square Meters): 86.79 acres or 351,227 square meters

31) Results of Investigation and Recommendations:

☐

a) No Cultural Resources Located.

☒

b) No National Register Eligible Cultural Resources Located.

☐

c) National Register Eligible Cultural Resources Located.

☐

d) Resources May Meet Requirements For National Register Eligibility; Phase II Testing Is Recommended.

e) Comments See attachment

Cultural Resource Management Contractor Information:

32) Archaeological Contractor: SCI Engineering, Inc.

33) Address/Phone: 650 Pierce Boulevard, O'Fallon, Illinois 62269 Phone: 618-206-3034

34) Surveyor(s): Jacob Province, Olha Patrick, Steven Sykes

35) Survey Date(s): June 7, 2023

36) Report Completed By: Jacob Province & Bryan Carlo

37) Date: July 25, 2023

38) Submitted By (Signature and Title): Bryan Carlo Senior Archaeologist

39) Attachment Check List: (Required)

- ☒ 1) Relevant Portion of USGS 7.5' Topographic Quadrangle Map(s) Showing Project Location And Any Recorded Sites;
- ☒ 2) Project Map(s) Depicting Survey Limits And, When Applicable, Approximate Site Limits, And Concentrations Of Cultural Materials;
- ☒ 3) Site Form(s): One Copy of Each Form;
- ☒ 4) All Relevant Project Correspondence;
- ☐ 5) Additional Information Sheets As Necessary.

40) Address Of Owner/Agent/Agency To Whom SHPO Comment Should Be Mailed:

Elliot Reed	cc.	Bryan Carlo
Cochran Engineering		SCI Engineering, Inc.
530A East Independence Drive		650 Pierce Blvd.
Union, Missouri 63084		O'Fallon, Illinois 62269

41) Contact Person: Bryan Carlo 42) Phone Number: 618-206-3034

<u>REVIEWER COMMENTS</u>

## Legal Location

The project area is located in the south half of Section 18, Township 44 North, Range 1 West.

## Comments

The approximate 87-acre project area is located south of Missouri Highway 100 in Washington, Missouri (Figures 1 and 2). The project area consists of several agricultural fields. A large field in the northeast portion of the project area was planted in winter wheat, while a large field located in the southwest portion was under new growth soybean (Photos 1 and 2). These fields were divided by an unnamed drainage (Photo 3). Several smaller fields were also located in the project area that were tilled but did not appear to be planted; they were bare (Photo 4). Both the wheat field and the soybean field yielded a ground surface visibility of 40 percent, while the bare field yielded nearly 100 percent visibility (Photos 5 through 7). The project area is located within the East Missouri drainage basin (Figure 4). The drainage basin is largely characterized by the Missouri River and its associated floodplain. The project area is located approximately 2.5 miles southwest of the Missouri River and is composed of gently rolling hills. The hills within the project area have been terraced and drainage tile has been installed to assist with draining these areas for cultivation (Photo 8 and 9). In addition, the project area is drained by several small drainages that appear to be improved. These drainages connect to St. Johns Creek, which flows east, connecting to the Missouri River. The project area is the location for a proposed industrial complex. Project plans are available (Figure 3).

A review of available historic maps (Figures 5 through 14) provides insight regarding the history of the project area and the presence or absence of structures within the project area through time. The first available map to depict the project area is the 1853 GLO map (Figure 5). GLOs do not depict structures. The next available map is the 1878 Atlas (Figure 6). No structures are depicted within the project area upon this map. Subsequent historic maps (Figures 7 through 14) depict an absence of structures within the project area. The 2012, 2017, and 2021 Washington West, Missouri USGS Topographic Quadrangles do not depict structures (Figure 12 through 14). A single structure was observed within the project area during the survey. The structure is briefly discussed below.

Examination of the Missouri Department of Natural Resources (MDNR) Archaeology Database reveals the project area has never been subject to a cultural resource survey. Three cultural resource surveys have been conducted within a one-mile radius of the project area. No cultural resource sites have been recorded within the project area. Seven cultural resource sites exist within one mile.

SCI conducted cultural resource field investigations at the project area on June 7, 2023. The project area consists of several terraced agricultural fields. Some fields are under new growth soybean and winter wheat, yielding a ground surface visibility of approximately 40 percent. Small sections of the project area were also recently tilled but not planted. These areas offered a ground surface visibility of nearly 100 percent (Figure 15). The project area was examined through systematic pedestrian survey at 5-meter intervals and limited shovel testing. Limited shovel testing was conducted to examine the subsurface conditions within the project area, and to assess the potential for the existence of subsurface features. Shovel testing entails the hand excavation of a small hole to the base of the plowzone and screening of the resultant spoil through ¼-inch hardware cloth. The locations of shovel tests were plotted with a GPS unit (Figure 16). A total of nine shovel tests were conducted within the project area.

## **Results of Investigations**

A total of nine shovel tests were conducted. The shovel tests placed upon elevated terrain displayed compacted and eroded soil profiles (Photo 10). Shovel tests conducted near the drainage tended to display deeper soil profiles and darker soils (Photo 11). All nine shovel tests were negative for cultural resources. A summary of shovel test results is provided in Appendix C.

The entire project area was also subjected to pedestrian survey at 5-meter intervals. The pedestrian survey resulted in the location of two new cultural resources. Both of these cultural resources consist of pre-contact isolated finds (IFs). Pedestrian survey also allowed for the location of one structure (Structure 1), a children's play area. Site forms and maps for each isolated find were submitted to the State Historic Preservation Office. The site forms are included as Appendix D, and the isolated finds are discussed below.

### **IF1**

IF1 is located along the southern boundary of the project area, north of a deeply incised drainage (Figures 1 and 17). The field from which IF1 was recovered was freshly plowed and offered nearly 100 percent ground surface visibility. Upon the location of IF1 the immediate area was surveyed at 2-meter intervals in an attempt to locate additional material, but none was observed. A shovel test placed in the vicinity also did not locate additional cultural material. IF1 consists of the distal end of a projectile point. The projectile point was formed from heat-altered Burlington Chert. The projectile point fragment does not possess diagnostic attributes. Isolated finds do not warrant site designation in the State of Missouri. IF1 is considered not eligible for inclusion on the National Register of Historic Places.

### **IF2**

IF2 is located within the eastern portion of the project area (Figures 1 and 17). The field from which IF2 was recovered was planted in winter wheat and yielded a ground surface visibility of approximately 40 percent. IF2 consists of a heat-altered Burlington chert tertiary flake. Following the recovery of IF2, the immediate area was subjected to pedestrian survey at 2-meter intervals in an attempt to recover additional cultural material. A shovel test was also placed in the vicinity to examine the subsurface conditions and search for additional cultural material. Neither the additional pedestrian survey nor the shovel test yielded cultural material. Isolated finds do not warrant site designation in the State of Missouri. IF2 is considered not eligible for inclusion on the National Register of Historic Places.

### **Structure 1**

A structure was located in the southwestern portion of the project area (Figure 17). This structure is a play area for children (Photo 12). It is constructed of four telephone poles and features two swings and a slide that lead into a small pond. This structure is modern and is considered not significant.

## **Summary and Recommendations**

Cultural resource field investigations were undertaken at the project area June 7, 2023. SCI conducted a pedestrian survey at 5-meter intervals across the entirety of the project area. The pedestrian survey allowed for the location of two pre-contact isolated finds (IF1 and IF2). A total of nine shovel tests were conducted across the project area to examine the subsurface conditions. None of the shovel tests allowed for the recovery of cultural resources. Shovel tests demonstrated that the elevated areas of the project area had been impacted by agricultural practices, including terracing, diminishing the potential for intact subsurface features, should they have been present prior to these ground disturbances. The two isolated finds do not warrant site designation in the State of Missouri. As such, neither of these isolated finds are considered

eligible for inclusion on the National Register. The children's play area (Structure 1) is also considered not significant. As significant or potentially significant cultural resources were not identified within the project area, further work is considered unwarranted. SCI recommends clearance for the proposed project.

## **Bibliography**

### General Land Office

1853 Map of Township 44 North, 1 West. General Land Office.

### Geo. A. Ogle & Co.

1898 *Atlas Map of Franklin County, Missouri*. Chicago, Illinois.

1919 *Atlas of Franklin County, Missouri*. Chicago, Illinois.

### The St. Louis Atlas Publishing Company

1878 *Atlas Map of Franklin County, Missouri*. St. Louis, Missouri.

### United States Geological Survey

1890 Hermann, MO 15' USGS Quadrangle (topographic). Reston, Virginia.

1948 Washington West, MO 15' USGS Quadrangle (topographic). Reston, Virginia.

1973 Washington West, MO 7.5' USGS Quadrangle (topographic). Reston, Virginia.

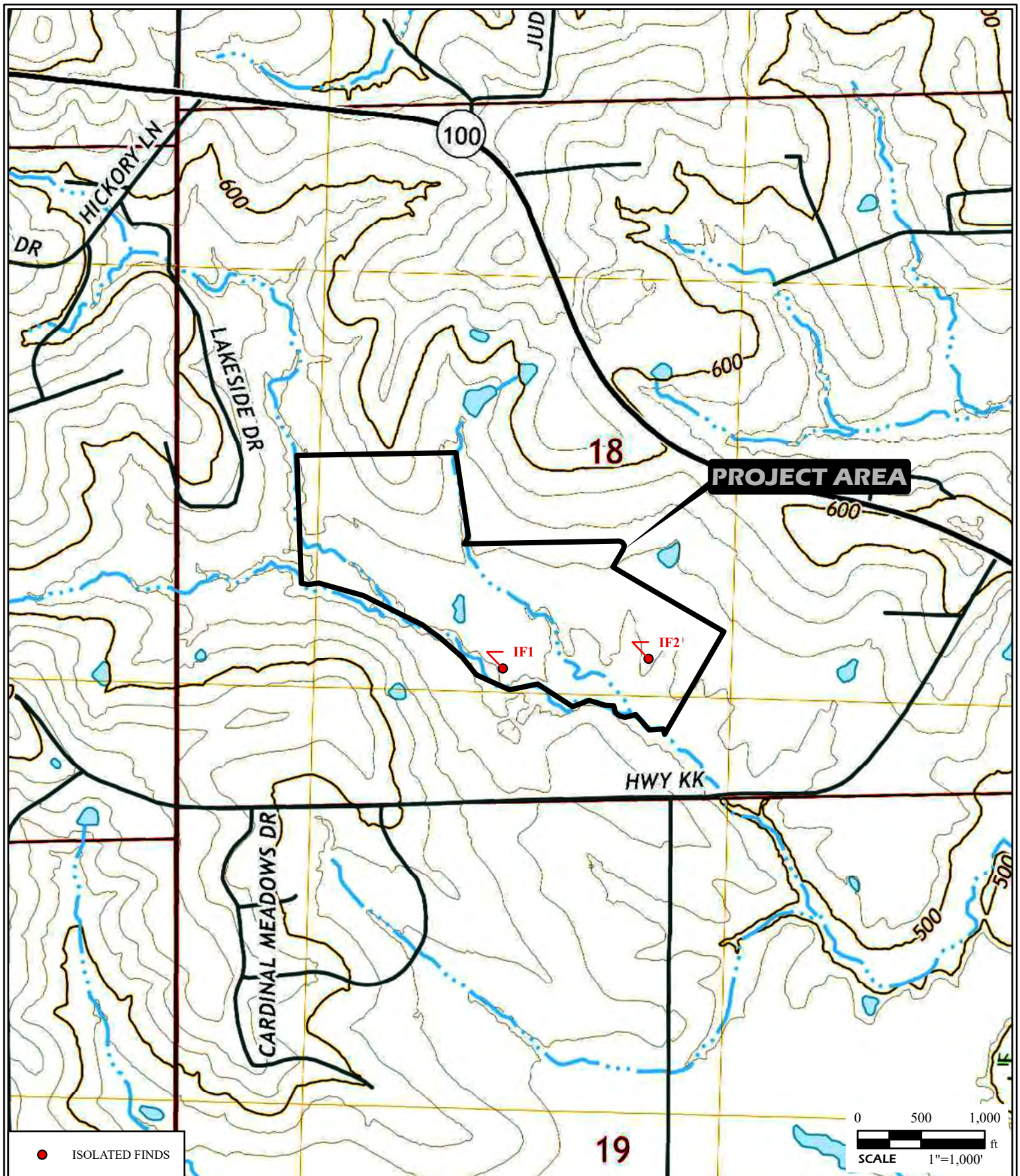
2012 Washington West, MO 7.5' USGS Quadrangle (topographic). Reston, Virginia.

2017 Washington West, MO 7.5' USGS Quadrangle (topographic). Reston, Virginia.

2021 Washington West, MO 7.5' USGS Quadrangle (topographic). Reston, Virginia.

# **Appendix A**





PROJECT NAME  
OLDENBURG INDUSTRIAL PARK  
FRANKLIN COUNTY, MISSOURI

VICINITY AND TOPOGRAPHIC MAP

DRAWN BY ACV

DATE

07/2023

JOB NUMBER

2023-0505.40

**GENERAL NOTES/LEGEND**

USGS TOPOGRAPHIC MAP  
WASHINGTON WEST MISSOURI QUADRANGLE  
DATED 1985  
20' CONTOURS

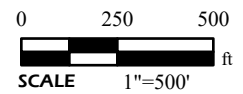
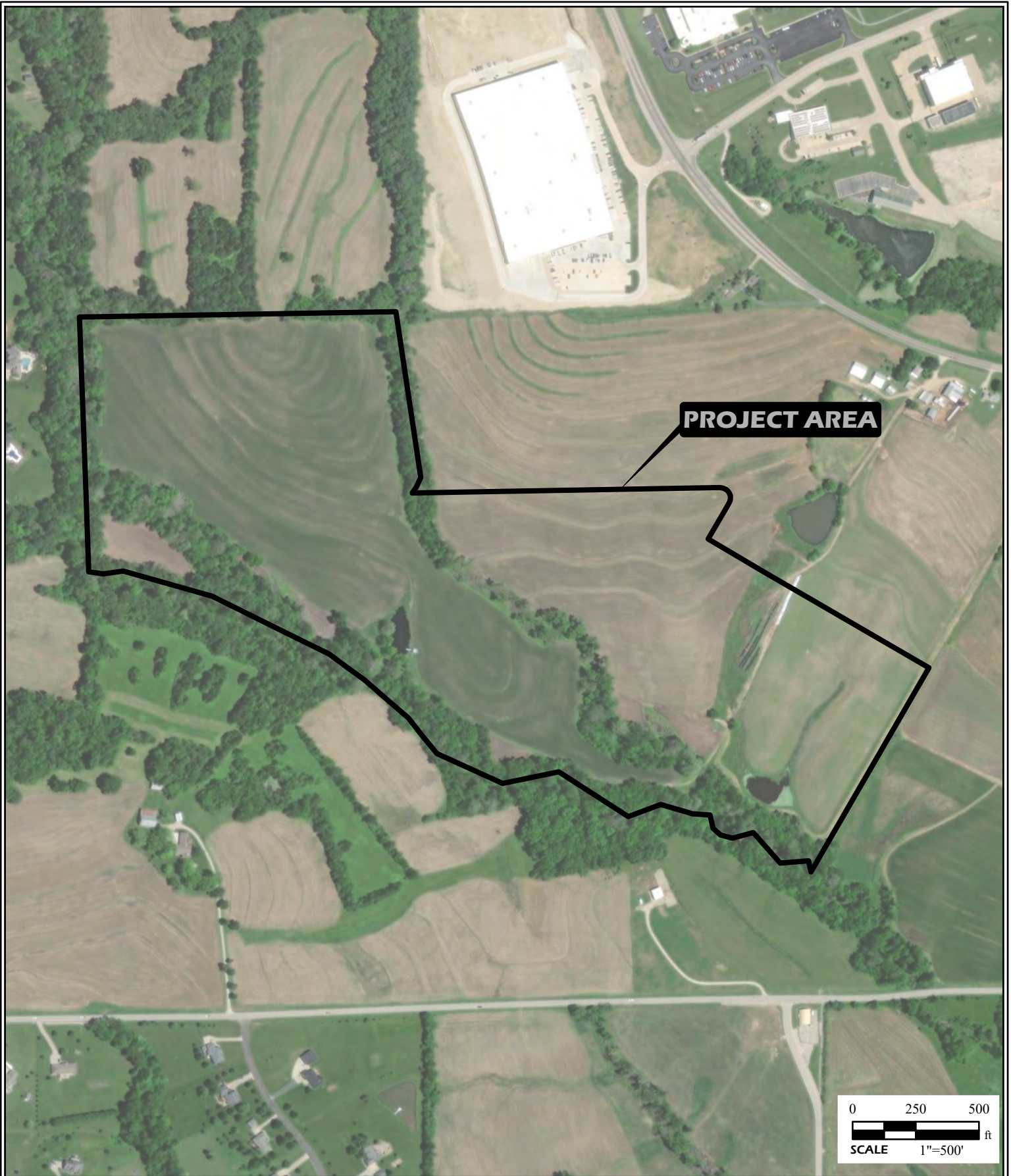
STREET MAP  
[HTTP://GOTO.ARCGISONLINE.COM/MAPS/WORLD\\_STREET\\_MAP](http://GOTO.ARCGISONLINE.COM/MAPS/WORLD_STREET_MAP)





FIGURE

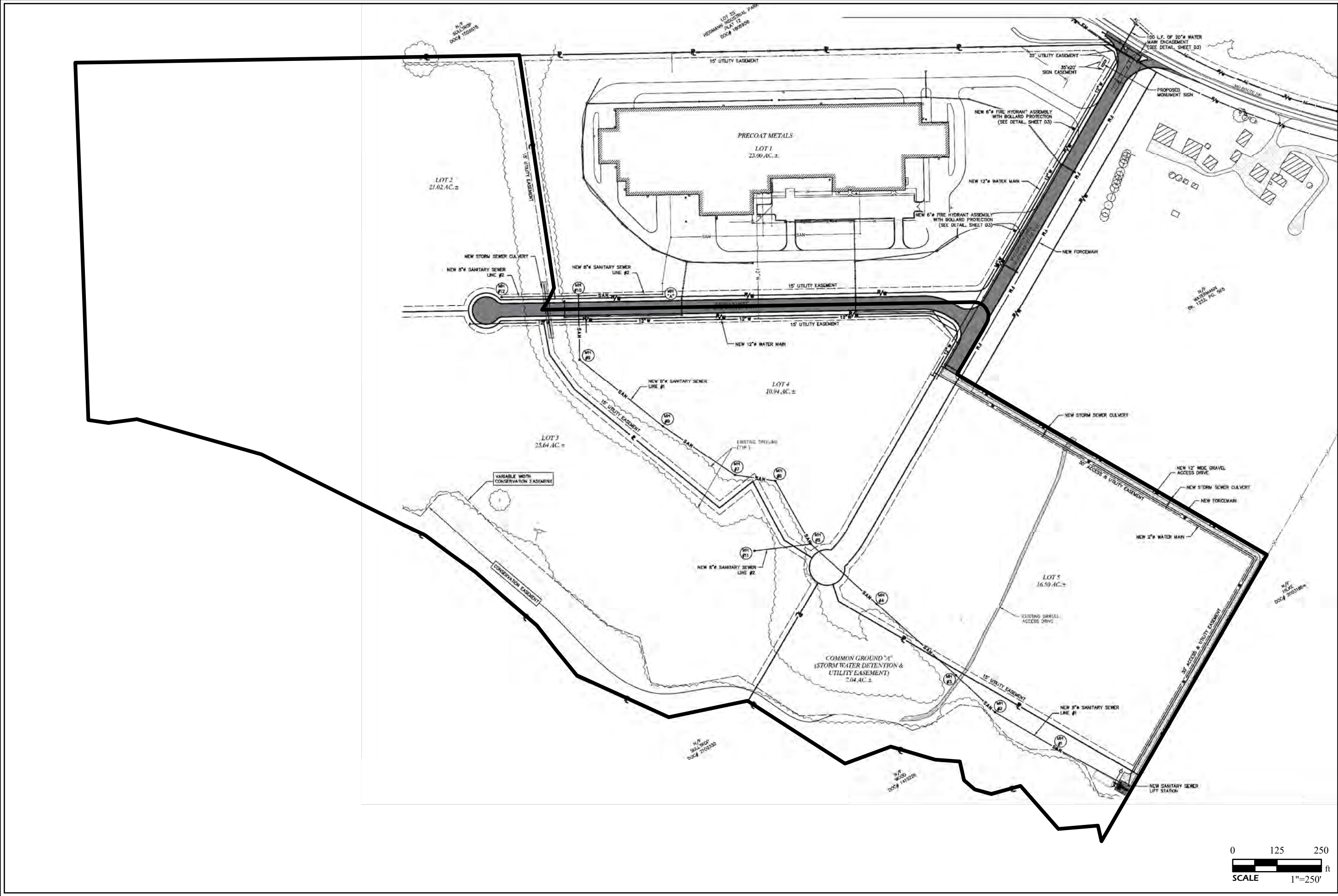
1






	PROJECT NAME			<u>GENERAL NOTES/LEGEND</u>	
	OLDENBURG INDUSTRIAL PARK FRANKLIN COUNTY, MISSOURI				
	AERIAL PHOTOGRAPH				
	DRAWN BY	ACV	DATE	JOB NUMBER	
	CHECKED BY	BMC	07/2023	2023-0505.40	FIGURE 2







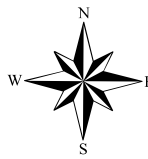
GENERAL NOTES/LEGEND

AERIAL PHOTOGRAPH OBTAINED FROM ARCGIS ONLINE, WORLD IMAGERY.  
 DIMENSIONS AND LOCATIONS ARE APPROXIMATE; ACTUAL MAY VARY. DRAWING SHALL NOT BE USED OUTSIDE THE CONTEXT OF THE REPORT FOR WHICH IT WAS GENERATED.

PROJECT NAME

OLDENBURG INDUSTRIAL PARK  
 FRANKLIN COUNTY, MISSOURI

PROJECT PLANS



JOB NUMBER

2023-0505.40

DATE

07/2023

DRAWN BY

ACV

CHECKED BY

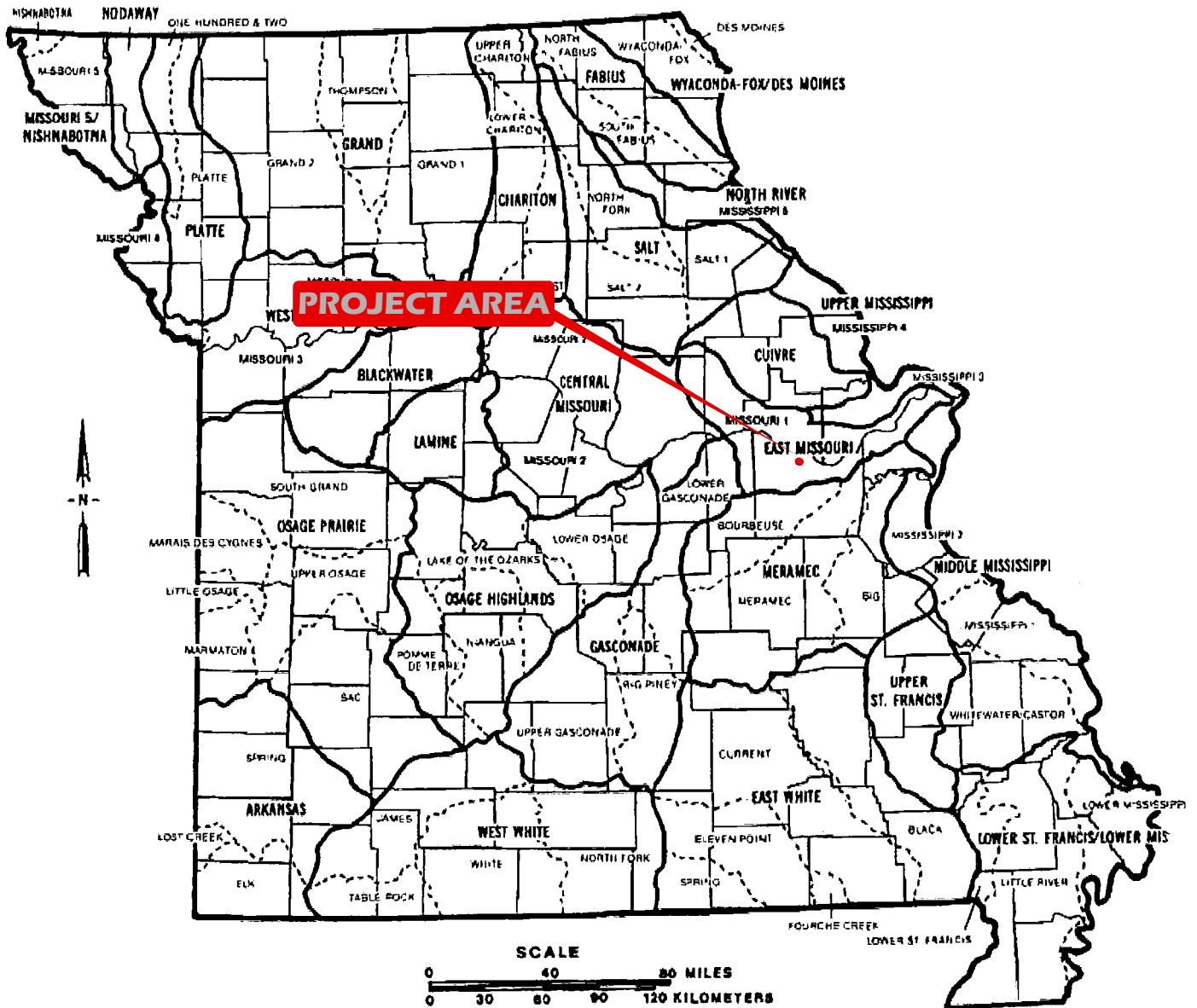
BMC

FIGURE

3



# MISSOURI'S DRAINAGE BASINS & WATERSHEDS



## Study Units and Watersheds

- PRINCIPAL DRAINAGE BASINS
- WATERSHEDS



PROJECT NAME  
OLDENBURG INDUSTRIAL PARK  
FRANKLIN COUNTY, MISSOURI

MISSOURI DRAINAGE MAP

DRAWN BY ACV  
CHECKED BY BMC

DATE  
07/2023

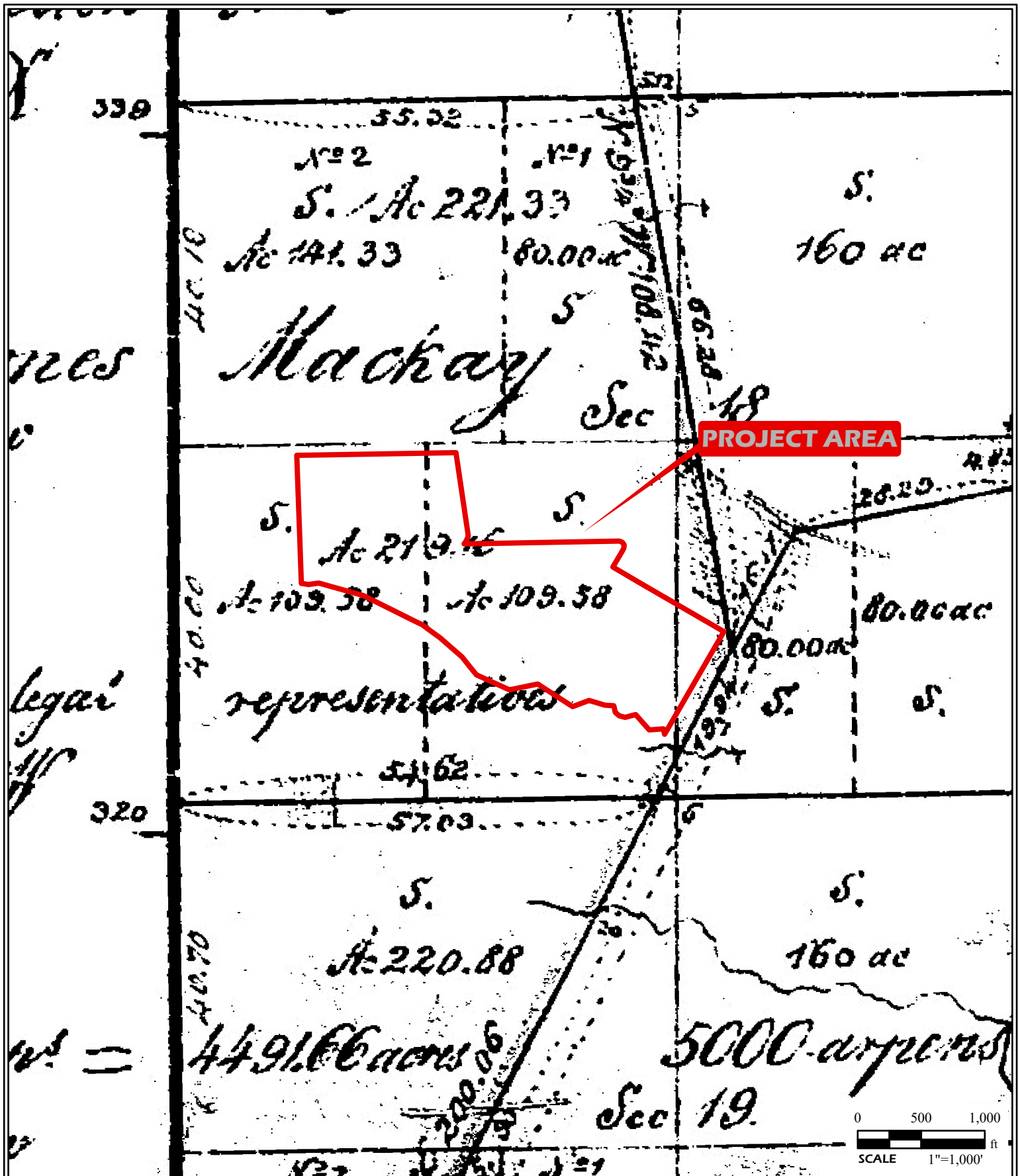
JOB NUMBER  
2023-0505.40


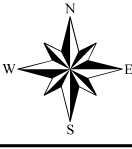
### GENERAL NOTES/LEGEND

MASTER PLAN FOR ARCHAEOLOGICAL RESOURCE  
PROTECTION IN MISSOURI  
PREPARED BY ARCHAEOLOGICAL ASSOCIATES  
AND ENVIRONMENTAL SYSTEMS ANALYSIS,  
FOR THE MISSOURI DEPARTMENT OF  
NATURAL RESOURCES

DATED 1987



FIGURE  
4



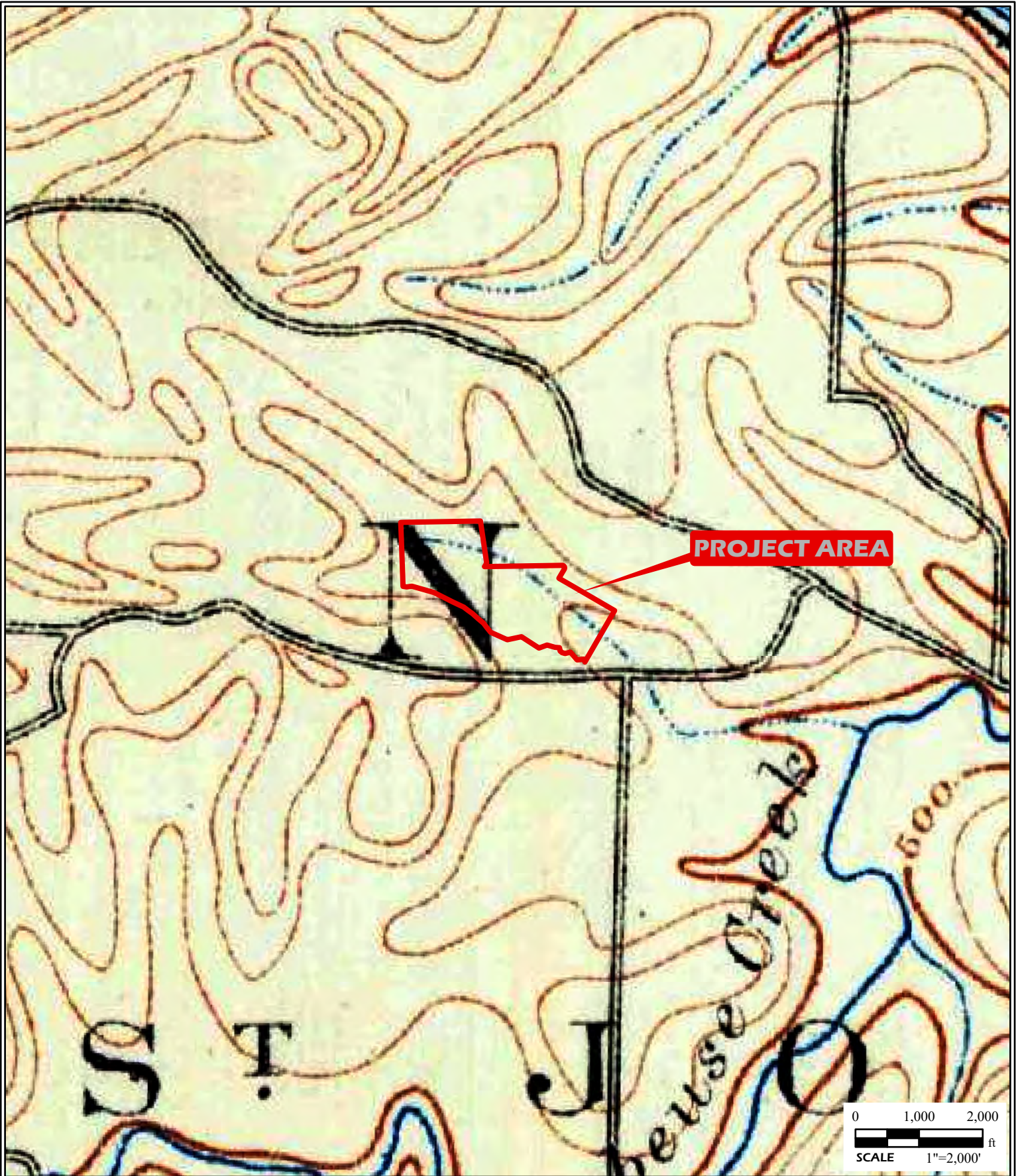
	PROJECT NAME			<u>GENERAL NOTES/LEGEND</u>	
	OLDENBURG INDUSTRIAL PARK FRANKLIN COUNTY, MISSOURI				
	1853 GLO MAP				
	DRAWN BY	ACV	DATE	JOB NUMBER	FIGURE
CHECKED BY	BMC	07/2023	2023-0505.40	5	


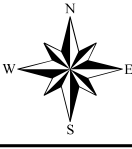




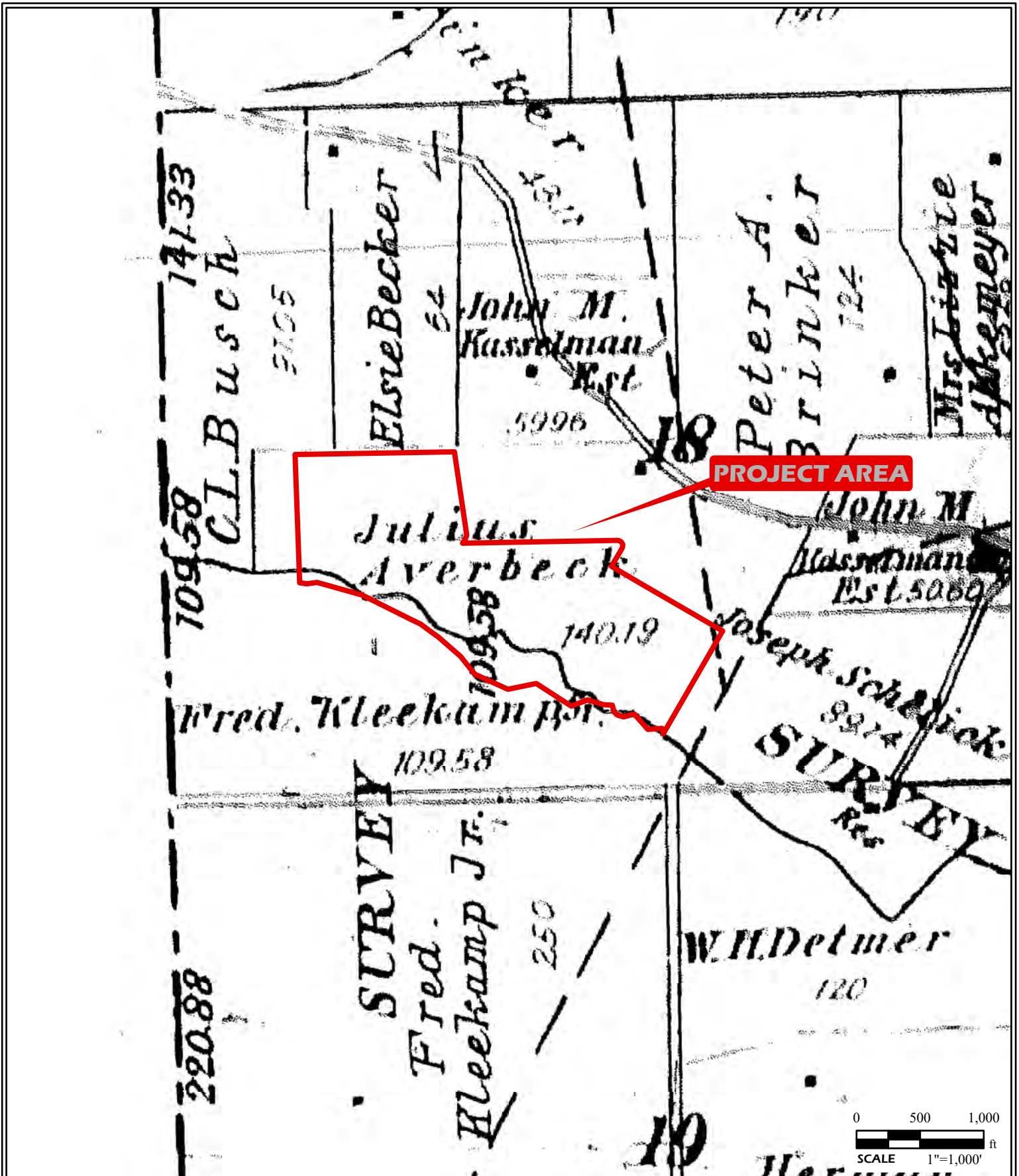
	PROJECT NAME			<u>GENERAL NOTES/LEGEND</u>	
	OLDENBURG INDUSTRIAL PARK FRANKLIN COUNTY, MISSOURI				
	1878 ATLAS MAP				
	DRAWN BY	ACV	DATE	JOB NUMBER	FIGURE 6
CHECKED BY	BMC	07/2023	2023-0505.40		







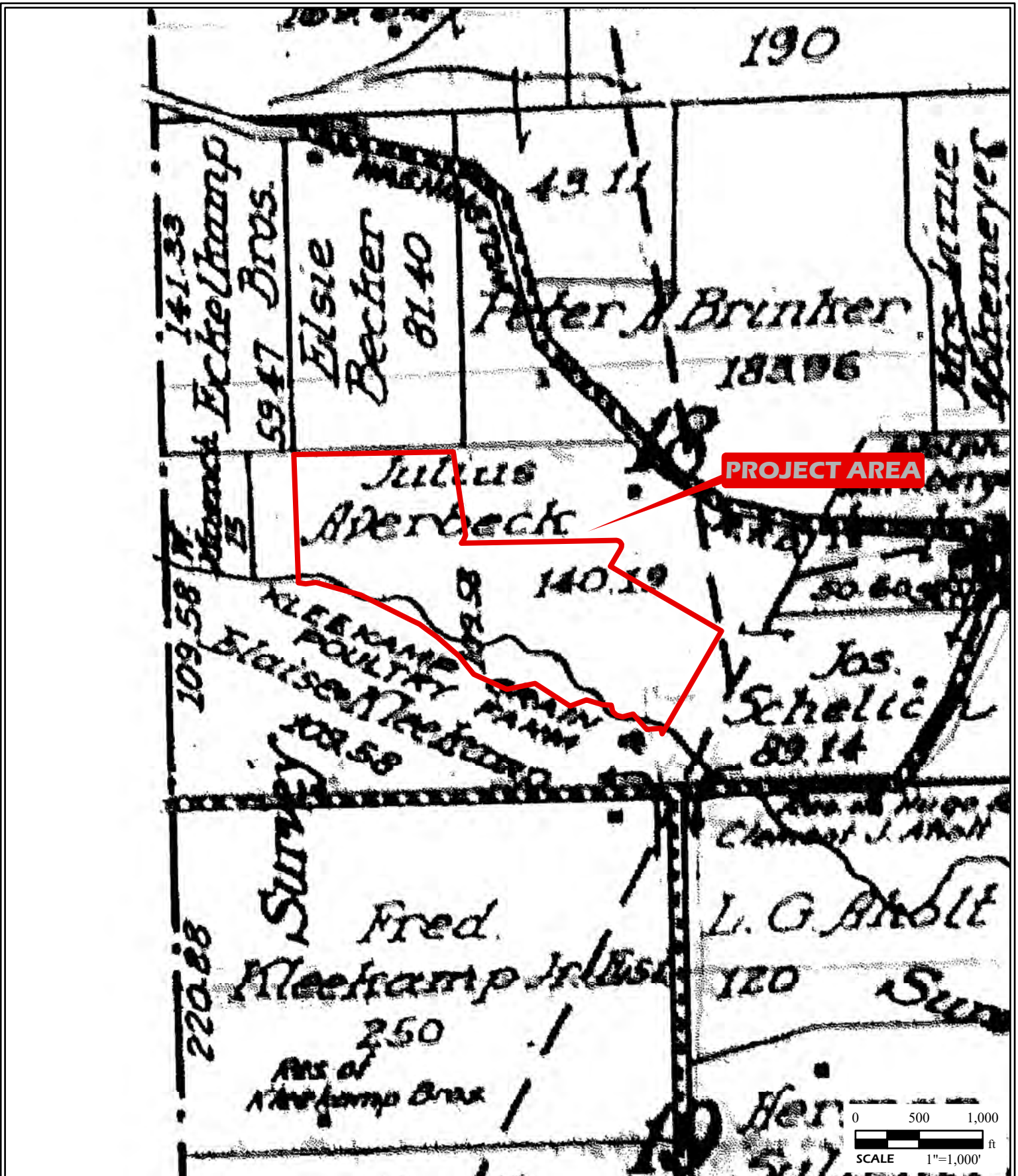
	PROJECT NAME			<u>GENERAL NOTES/LEGEND</u> USGS TOPOGRAPHIC MAP HERMANN, MISSOURI QUADRANGLE DATED 1890 15' CONTOURS		
	OLDENBURG INDUSTRIAL PARK FRANKLIN COUNTY, MISSOURI					
	USGS 1890 TOPOGRAPHIC MAP					
	DRAWN BY	ACV	DATE			JOB NUMBER
	CHECKED BY	BMC	07/2023			2023-0505.40
FIGURE 7						







	PROJECT NAME			<u>GENERAL NOTES/LEGEND</u>	
	OLDENBURG INDUSTRIAL PARK FRANKLIN COUNTY, MISSOURI				
	1898 ATLAS MAP				
	DRAWN BY	ACV	DATE	JOB NUMBER	FIGURE 8
CHECKED BY	BMC	07/2023	2023-0505.40		


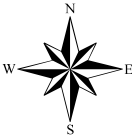




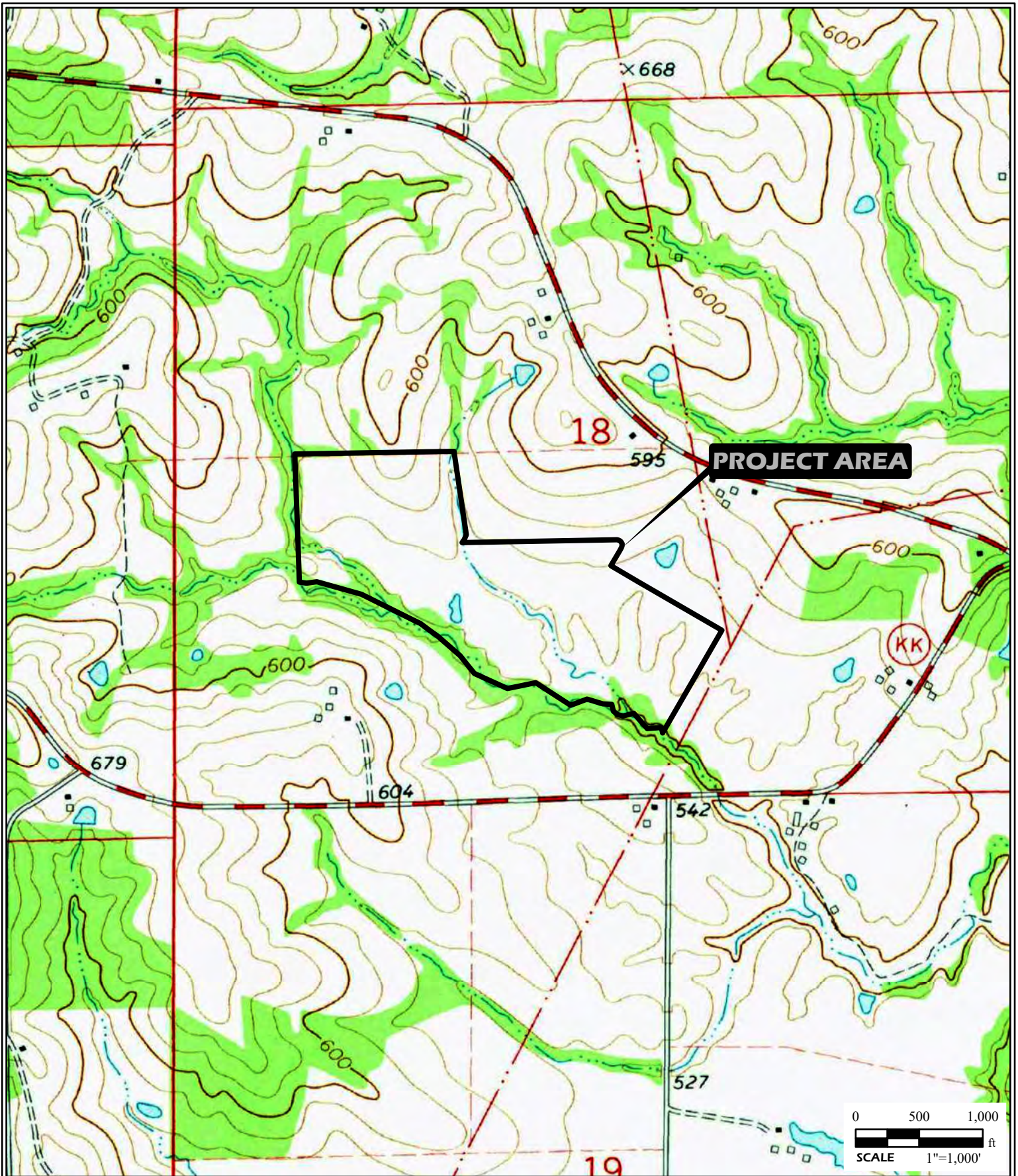
	PROJECT NAME			<u>GENERAL NOTES/LEGEND</u>	
	OLDENBURG INDUSTRIAL PARK FRANKLIN COUNTY, MISSOURI				
	1919 ATLAS MAP				
	DRAWN BY ACV	DATE 07/2023	JOB NUMBER 2023-0505.40	FIGURE 9	
	CHECKED BY BMC				


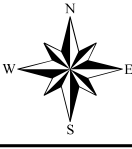




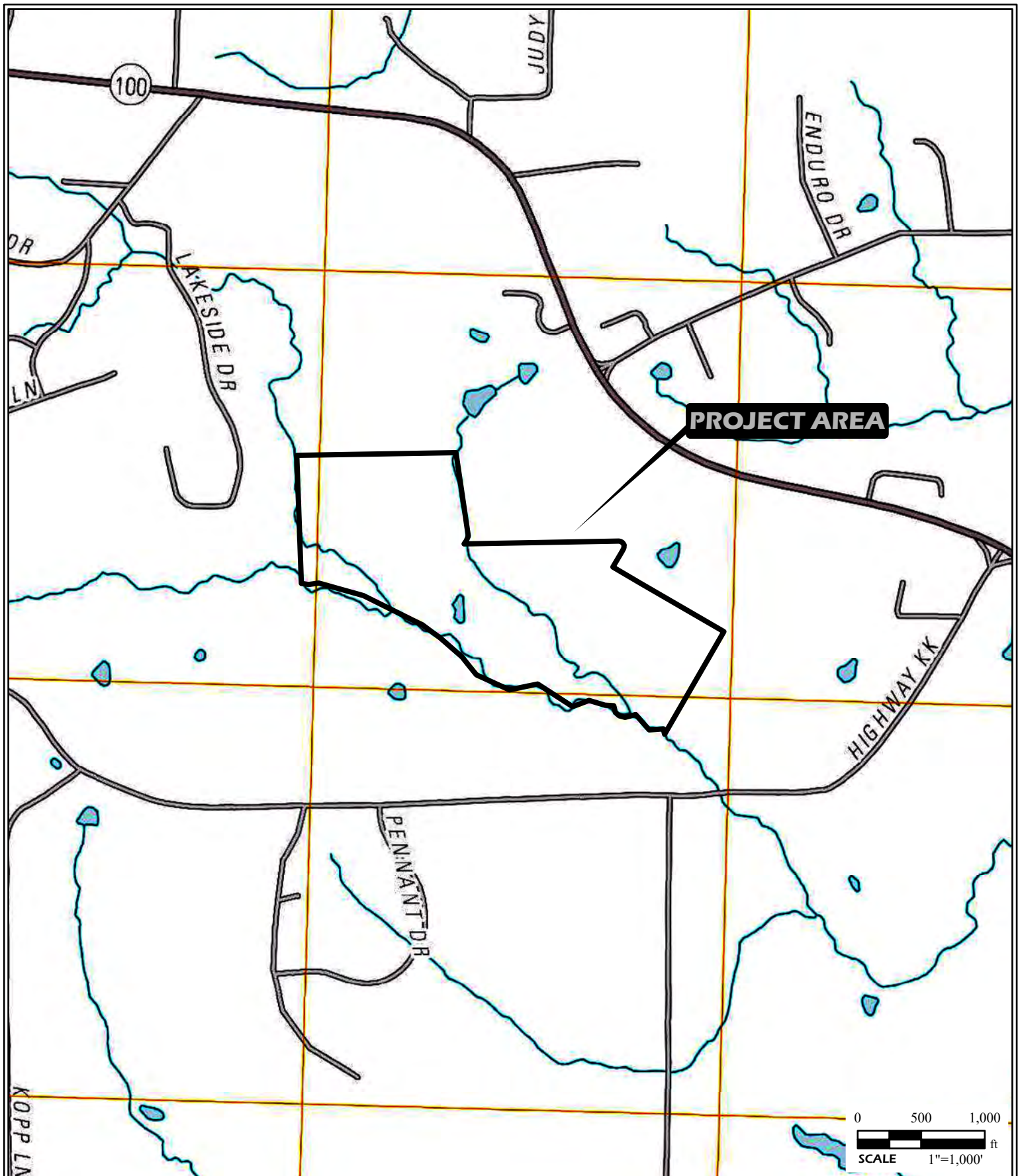
	PROJECT NAME			<u>GENERAL NOTES/LEGEND</u> USGS TOPOGRAPHIC MAP WASHINGTON, MISSOURI QUADRANGLE DATED 1948 15' CONTOURS	
	OLDENBURG INDUSTRIAL PARK FRANKLIN COUNTY, MISSOURI				
	USGS 1948 TOPOGRAPHIC MAP				
	DRAWN BY	ACV	DATE	JOB NUMBER	
	CHECKED BY	BMC	07/2023	2023-0505.40	FIGURE 10


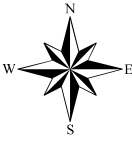




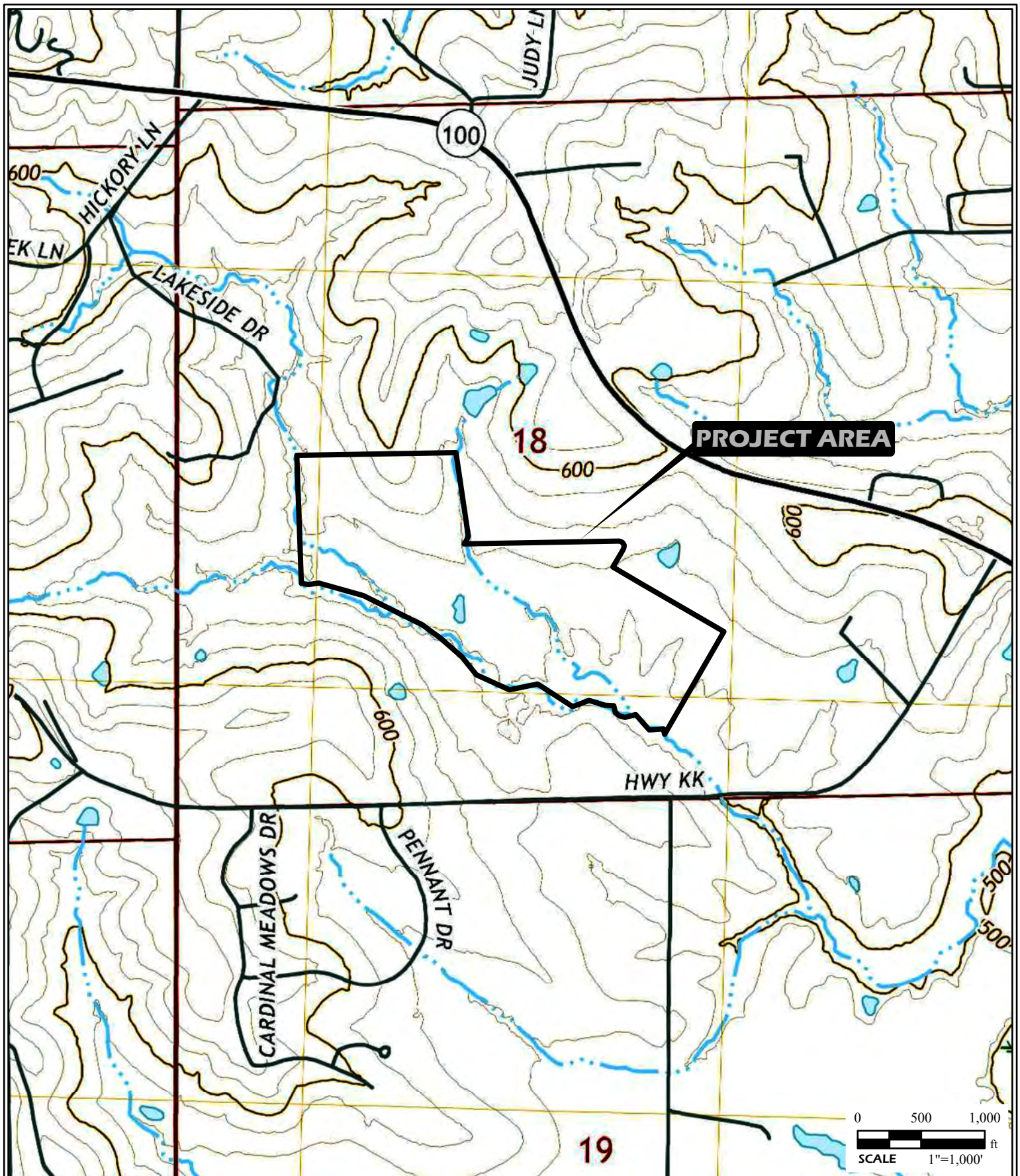
	<b>PROJECT NAME</b>			<b><u>GENERAL NOTES/LEGEND</u></b> USGS TOPOGRAPHIC MAP WASHINGTON WEST, MISSOURI QUADRANGLE DATED 1973 7.5' CONTOURS	
	OLDENBURG INDUSTRIAL PARK FRANKLIN COUNTY, MISSOURI				
	USGS 1973 TOPOGRAPHIC MAP				
	<b>DRAWN BY</b> ACV	<b>DATE</b>	<b>JOB NUMBER</b>		
	<b>CHECKED BY</b> BMC	07/2023	2023-0505.40		<b>FIGURE</b> 11


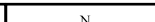




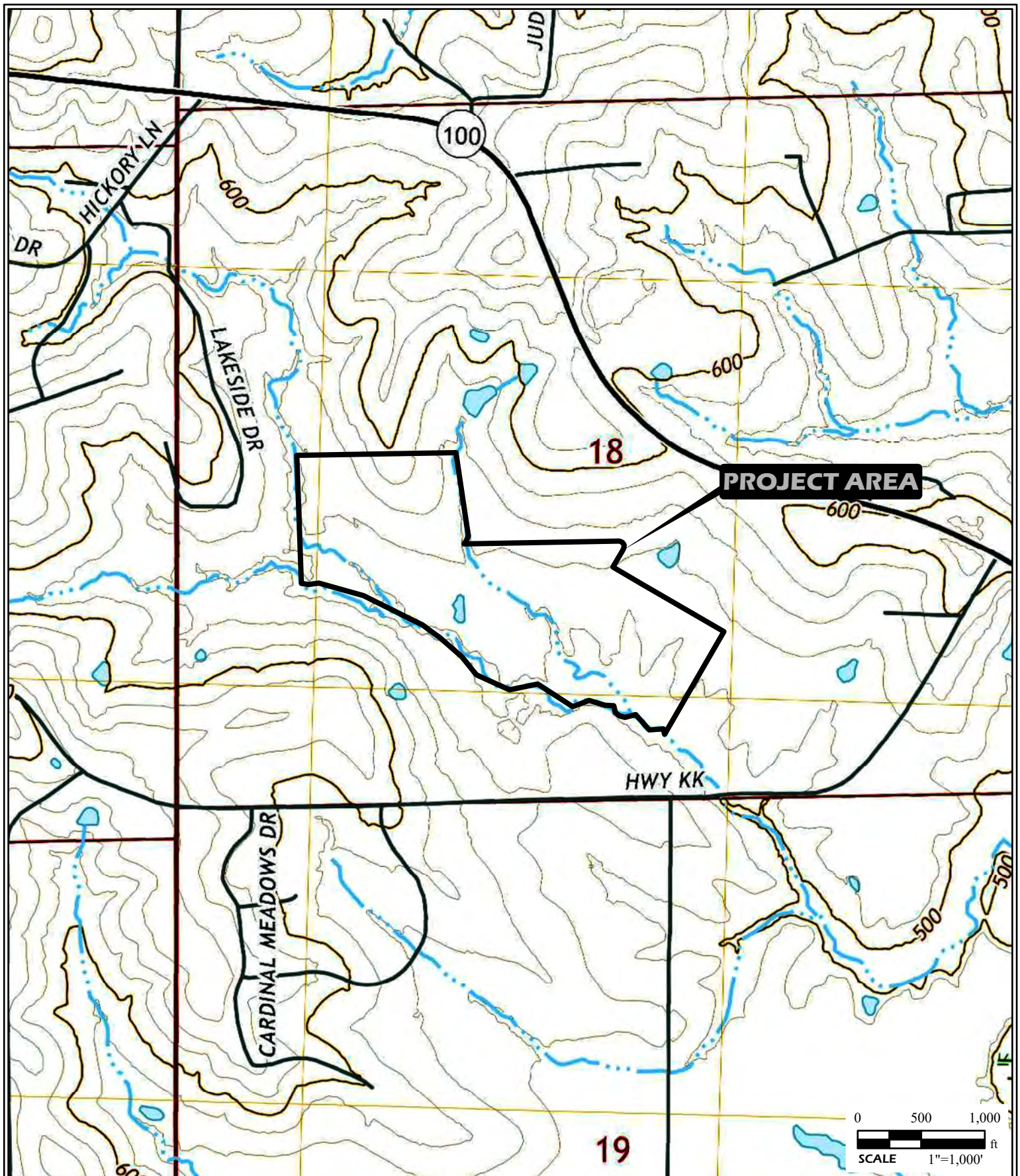
	PROJECT NAME			<u>GENERAL NOTES/LEGEND</u> USGS TOPOGRAPHIC MAP WASHINGTON WEST, MISSOURI QUADRANGLE DATED 2012 7.5' CONTOURS	
	OLDENBURG INDUSTRIAL PARK FRANKLIN COUNTY, MISSOURI				
	USGS 2012 TOPOGRAPHIC MAP				
	DRAWN BY	ACV	DATE	JOB NUMBER	FIGURE 12
	CHECKED BY	BMC	07/2023	2023-0505.40	







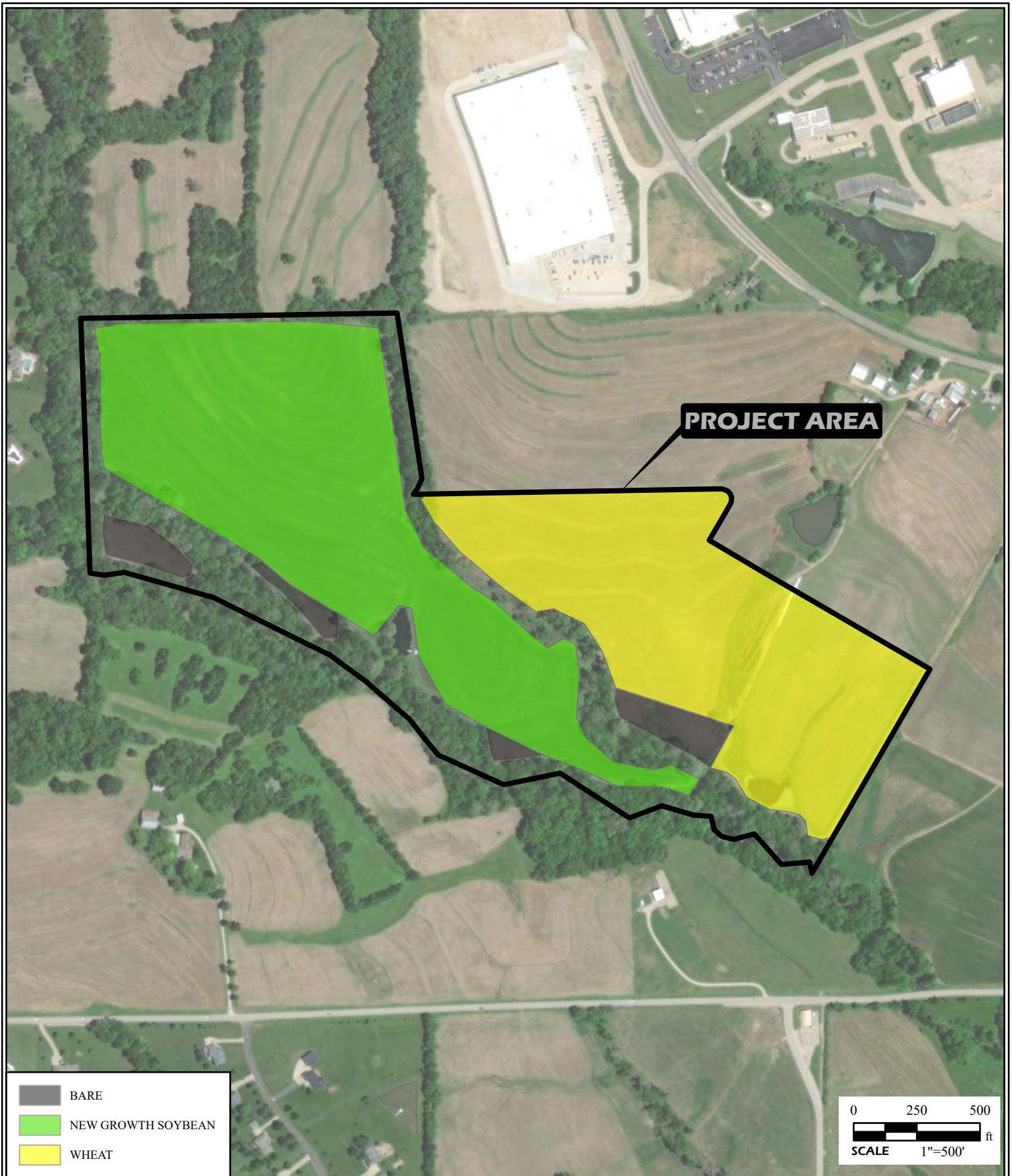
	PROJECT NAME			<u>GENERAL NOTES/LEGEND</u> USGS TOPOGRAPHIC MAP WASHINGTON WEST, MISSOURI QUADRANGLE DATED 2017 7.5' CONTOURS	
	OLDENBURG INDUSTRIAL PARK FRANKLIN COUNTY, MISSOURI				
	USGS 2017 TOPOGRAPHIC MAP				
	DRAWN BY	ACV	DATE	JOB NUMBER	FIGURE 13
CHECKED BY	BMC	07/2023	2023-0505.40		


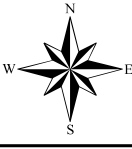




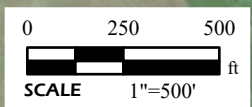
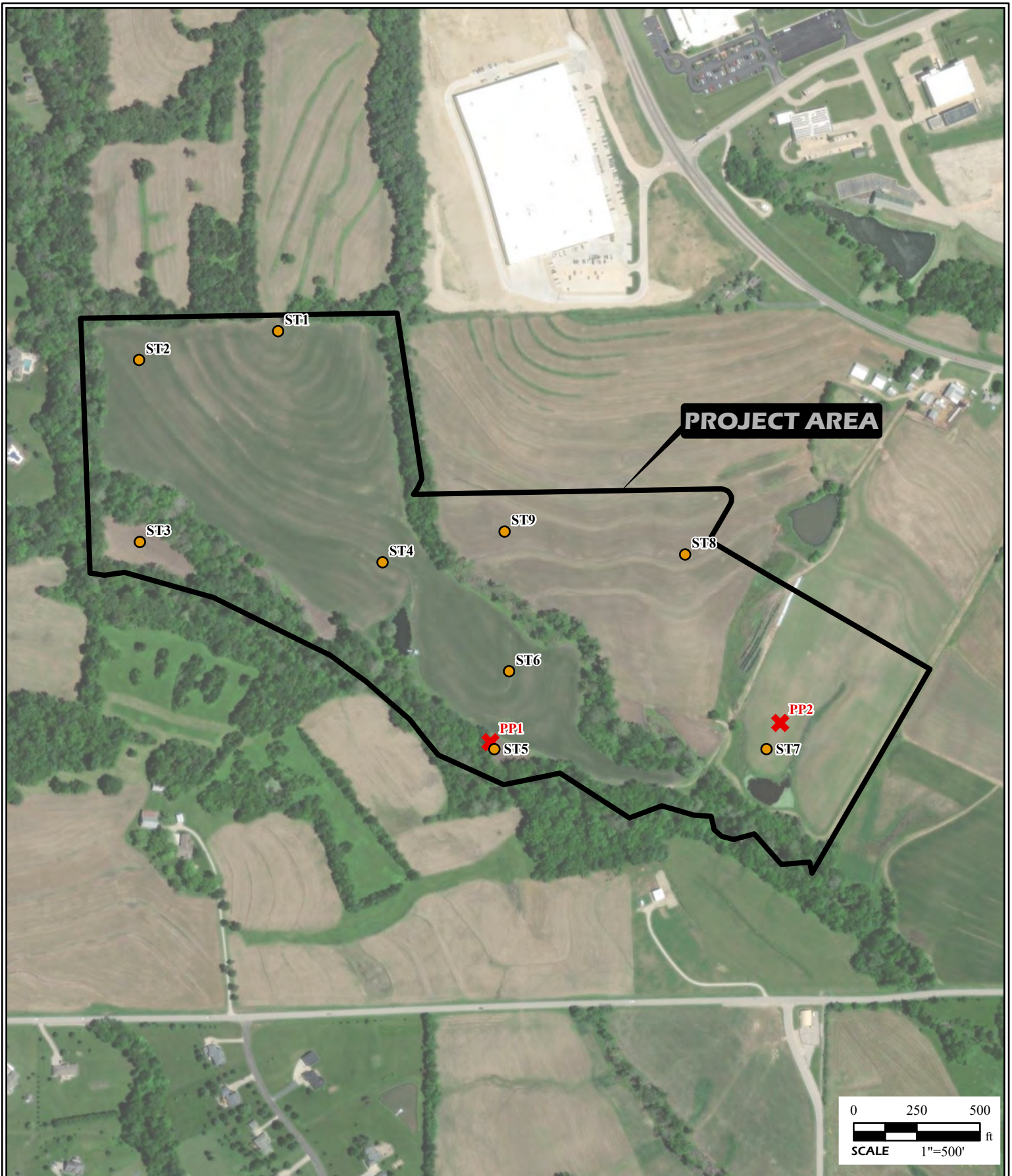
	PROJECT NAME			<u>GENERAL NOTES/LEGEND</u> USGS TOPOGRAPHIC MAP WASHINGTON WEST, MISSOURI QUADRANGLE DATED 2021 7.5' CONTOURS	
	OLDENBURG INDUSTRIAL PARK FRANKLIN COUNTY, MISSOURI				
	USGS 2021 TOPOGRAPHIC MAP				
	DRAWN BY	ACV	DATE	JOB NUMBER	
	CHECKED BY	BMC	07/2023	2023-0505.40	FIGURE 14







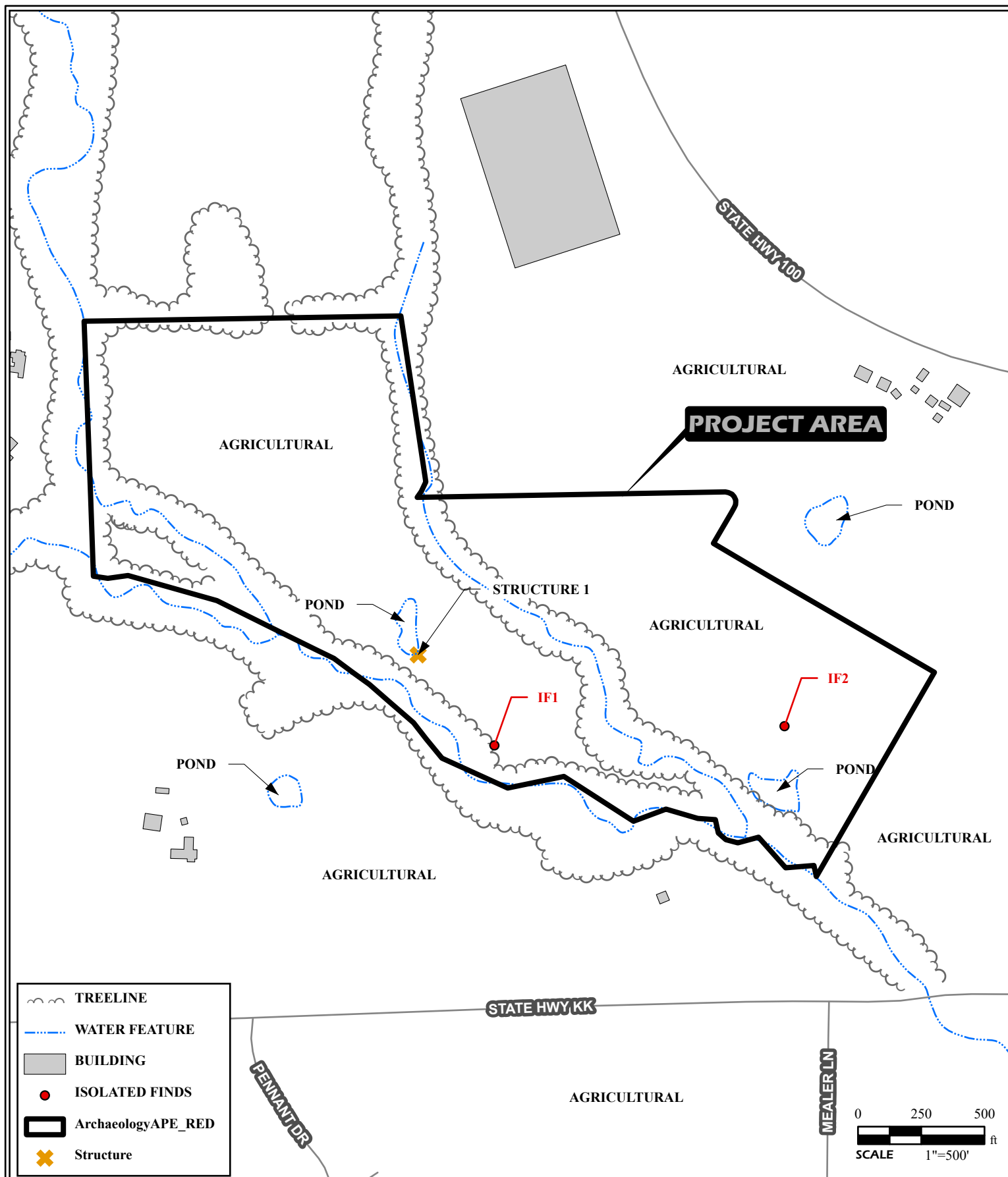
	<b>PROJECT NAME</b> OLDENBURG INDUSTRIAL PARK FRANKLIN COUNTY, MISSOURI			<b>GENERAL NOTES/LEGEND</b>  AERIAL PHOTOGRAPH OBTAINED FROM ARCGIS ONLINE, WORLD IMAGERY.  DIMENSIONS AND LOCATIONS ARE APPROXIMATE; ACTUAL MAY VARY. DRAWING SHALL NOT BE USED OUTSIDE THE CONTEXT OF THE REPORT FOR WHICH IT WAS GENERATED.	 <b>FIGURE</b> 15
	<b>GROUND CONDITIONS MAP</b>				
	<b>DRAWN BY</b> ACV	<b>DATE</b> 07/2023	<b>JOB NUMBER</b> 2023-0505.40		
	<b>CHECKED BY</b> BMC				





	<b>PROJECT NAME</b> OLDENBURG INDUSTRIAL PARK FRANKLIN COUNTY, MISSOURI			<b>GENERAL NOTES/LEGEND</b>  ● APPROXIMATE SHOVEL TEST LOCATIONS  ✖ APPROXIMATE PIECE PLOT LOCATIONS  AERIAL PHOTOGRAPH OBTAINED FROM ARCGIS ONLINE, WORLD IMAGERY.  DIMENSIONS AND LOCATIONS ARE APPROXIMATE; ACTUAL MAY VARY. DRAWING SHALL NOT BE USED OUTSIDE THE CONTEXT OF THE REPORT FOR WHICH IT WAS GENERATED.	
	<b>TESTING MAP</b>				
	<b>DRAWN BY</b> ACV	<b>DATE</b> 07/2023	<b>JOB NUMBER</b> 2023-0505.40		
	<b>CHECKED BY</b> BMC				





PROJECT NAME  
OLDENBURG INDUSTRIAL PARK  
FRANKLIN COUNTY, MISSOURI

#### SKETCH MAP

DRAWN BY ACV  
CHECKED BY BMC

DATE  
07/2023

JOB NUMBER  
2023-0505.40

#### GENERAL NOTES/LEGEND

DIMENSIONS AND LOCATIONS ARE APPROXIMATE; ACTUAL MAY VARY.  
DRAWING SHALL NOT BE USED OUTSIDE THE CONTEXT OF THE REPORT FOR  
WHICH IT WAS GENERATED.

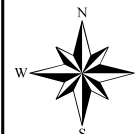


FIGURE  
17

# **Appendix B**



Photo 1. Overview of wheat field. View to the west.



Photo 2. Overview of new growth soybean field. View to the north.



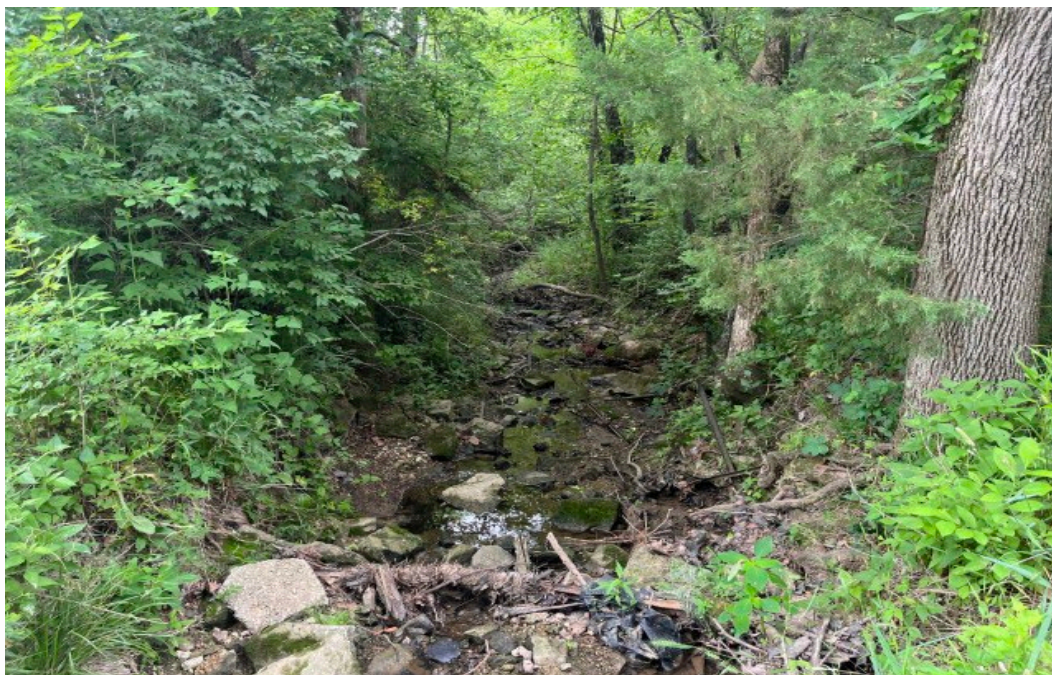


Photo 3. View of drainage. View to the southeast.



Photo 4. Overview of bare field. View to the north.





Photo 5. View of ground surface visibility in wheat field.



Photo 6. View of ground surface visibility in new growth soybean field.





Photo 7. View of ground surface visibility in bare field.



Photo 8. View of terrace. View to the northwest.





Photo 9. View of drainage tile inlet.



Photo 10. View of shovel test 1.





Photo 11. View of shovel test 5.



Photo 12. View of Structure 1. View to the west.

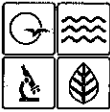


# Appendix C

### Appendix C - Shovel Test Results

Shovel Probe #	Depth (cm)	Soil Profile	Mat.	Photo #	Comments
1	40	Brown (10YR 4/3) silt loam (0-30 cm); Yellowish Brown (10YR 5/6) silt loam (30-40 cm)	neg.	10	
2	32	Brown (10YR 4/3) silt loam (0-22 cm); Yellowish Brown (10YR 5/6) silt loam (22-32 cm)	neg.	No Photo	
3	50	Very Dark Grayish Brown (10YR 3/2) silt loam (0-40 cm); Very Dark Grayish Brown (10YR 3/2) silt loam (40-50 cm)	neg.	No Photo	
4	35	Brown (10YR 4/3) silt loam (0-25 cm); Yellowish Brown (10YR 5/6) silt loam (25-35 cm)	neg.	No Photo	
5	40	Dark Brown (10YR 3/3) silt loam (0-30 cm); Light Brownish Gray (10YR 6/2) silt loam (30-40 cm)	neg.	No Photo	
6	20	Yellowish Brown (10YR 5/6) Clay (0-8 cm); Brownish Yellow(10YR 6/8) silt loam (8-20 cm)	neg.	No Photo	Extremely compacted
7	15	Grayish Brown (10YR 5/2) Clay (0-5 cm);Yellowish Brown (10YR 5/4) Clay (5-15 cm)	neg.	No Photo	Extremely compacted
8	21	Grayish Brown (10YR 5/2) Clay (0-9 cm);Yellowish Brown (10YR 5/4) Clay (9-21 cm)	neg.	No Photo	Extremely compacted
9	21	Grayish Brown (10YR 5/2) Clay (0-9 cm);Yellowish Brown (10YR 5/4) Clay (9-21 cm)	neg.	No Photo	Extremely compacted

# Appendix D



MISSOURI DEPARTMENT OF NATURAL RESOURCES  
DIVISION OF STATE PARKS  
**ARCHAEOLOGICAL SITE RECORDATION (PAGE 1 OF 7)**

1. COUNTY Franklin		2. LOCAL NAME/FIELD NUMBER IF1		3. SHPO SITE NUMBER	
4. SECTION / LAND GRANT 18		5. TWP 44N		6. RANGE 1W	
7. UPDATE? No		8. QUAD NAME Washington West		9. TOPO DATE 2021	
10. SITE AREA (M <sup>2</sup> )		11. UTM ZONE 15S		12. UTM NORTHING 667448	
13. UTM EASTING 470056		14. DATUM NAD 83		15. NRHP STATUS Not Eligible	
16. OWNER / ADDRESS OF PROPERTY				17. TENANT / ADDRESS OF PROPERTY	
18. INFORMATION CURRENT AS OF July 17, 2023		19. RECORDER NAME/ADDRESS J. Province / 650 Pierce Boulevard O'Fallon, IL 62269		20. RECORDING ORGANIZATION SCI Engineering, Inc.	
21. SITE DESCRIPTION The isolated find is located within an agricultural field south of Missouri Highway 100. The field is directly north of a small intermittent stream. North of the site is a steep hill that has been terraced for farming. The field was plowed, allowing nearly 100% visibility.					
22. CULTURAL AFFILIATION (INDICATE ALL COMPONENTS PRESENT.) PREHISTORIC Prehistoric  DEFINE "OTHER" HISTORIC  DEFINE "OTHER"					
23. SITE TYPE (INDICATE ALL THAT APPLY) Other DEFINE "OTHER" Isolated Find					
24. WATER SOURCE Intermittent Stream DEFINE "OTHER"		NAME Unnamed		DISTANCE (m) 50 meters southwest	
25. TOPOGRAPHIC LOCATION River/stream terrace		DEFINE "OTHER"			
26. MATERIAL REPORTED (INDICATE ALL THAT APPLY) Lithic Tool  DEFINE "OTHER"					
27. COLLECTION? Yes		28. REPOSITORY University of Missouri-Columbia			
29. REMOTE SENSING (INDICATE ALL THAT APPLY)  DEFINE "OTHER"					
30. SAMPLING TECHNIQUE (INDICATE ALL THAT APPLY) Pedestrian Survey Shovel Test  DEFINE "OTHER"					



MISSOURI DEPARTMENT OF NATURAL RESOURCES  
DIVISION OF STATE PARKS  
**ARCHAEOLOGICAL SITE RECORDATION (PAGE 2 OF 7)**

31. SOIL TYPE <b>Silt Loam</b>	32. LAND USE <b>Cultivated</b> DEFINE "OTHER"	33. CONTOUR ELEVATION (FT/M) <b>525 ft./160m</b>
-----------------------------------	--	---

34. LITERATURE SOURCES

35. FEATURES PRESENT (INDICATE ALL THAT APPLY)

**PREHISTORIC**

DEFINE "OTHER"

**HISTORIC**

DEFINE "OTHER"

36. FLORAL / FAUNAL REMAINS	37. HUMAN REMAINS
-----------------------------	-------------------

38. ARTIFACT DESCRIPTIONS

The isolated find consists of the distal end of a projectile point.

The large point measures approximately 3 cm wide by 3 cm long. The point is broken mid-shaft. The point is made of heat treated Burlington chert.

(Attach to paper form or e-mail the following as attachments)

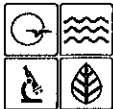
39. ARTIFACT ILLUSTRATIONS

40. SKETCH MAP: Include on the sketch-map the key topographic features such as streams, hills, elevations, houses, and roads. Sketch map must include a scale and north arrow.

41. USGS TOPOGRAPHIC MAP SECTION: Attach a copy of the relevant portion of the USGS 7.5 minute quadrangle where the site location is shown. Please be sure to include a North arrow and write the name of the quadrangle on the map section.

Form last revised on 06/30/05.

**Return completed form to: State Historic Preservation Office, Lewis & Clark State Office Bldg, 1101 Riverside Drive  
PO Box 176, Jefferson City, MO 65102-0176. Office: (573) 751-7856, Fax: (573) 522-6262**



MISSOURI DEPARTMENT OF NATURAL RESOURCES  
DIVISION OF STATE PARKS  
**ARCHAEOLOGICAL SITE RECORDATION (PAGE 1 OF 7)**

1. COUNTY <b>Franklin</b>		2. LOCAL NAME/FIELD NUMBER <b>IF2</b>		3. SHPO SITE NUMBER	
4. SECTION / LAND GRANT <b>18</b>		5. TWP <b>44N</b>		6. RANGE <b>1W</b>	
8. QUAD NAME <b>Washington</b>		9. TOPO DATE <b>2021</b>		10. SITE AREA (M <sup>2</sup> )	
12. UTM NORTHING <b>4270060</b>		13. UTM EASTING <b>667780</b>		14. DATUM <b>NAD 83</b>	
16. OWNER / ADDRESS OF PROPERTY		17. TENANT / ADDRESS OF PROPERTY			
18. INFORMATION CURRENT AS OF <b>7 Jun 23</b>		19. RECORDER NAME/ADDRESS <b>J. Province / 650 Pierce Boulevard O'Fallon, IL 62269</b>		20. RECORDING ORGANIZATION <b>SCI Engineering Inc.</b>	
21. SITE DESCRIPTION <p>The site is an isolated find located on a hill within an agricultural field south of Missouri Highway 100. The site sits directly north of a small human made pond.</p>					
22. CULTURAL AFFILIATION (INDICATE ALL COMPONENTS PRESENT) <b>PREHISTORIC</b> Prehistoric  DEFINE "OTHER" <b>HISTORIC</b>  DEFINE "OTHER"					
23. SITE TYPE (INDICATE ALL THAT APPLY) <b>Other</b> DEFINE "OTHER" <b>Isolated Find</b>					
24. WATER SOURCE <b>Intermittent Stream</b>		NAME <b>Unnamed</b>		DISTANCE (m) <b>150 Meters South.</b>	
25. TOPOGRAPHIC LOCATION <b>Hill</b>		DEFINE "OTHER"			
26. MATERIAL REPORTED (INDICATE ALL THAT APPLY) <b>Lithics</b>  DEFINE "OTHER"					
27. COLLECTION? <b>Yes</b>		28. REPOSITORY <b>University of Missouri, Columbia</b>			
29. REMOTE SENSING (INDICATE ALL THAT APPLY)  DEFINE "OTHER"					
30. SAMPLING TECHNIQUE (INDICATE ALL THAT APPLY) <b>Pedestrian Survey      Shovel Test</b>  DEFINE "OTHER"					



MISSOURI DEPARTMENT OF NATURAL RESOURCES  
DIVISION OF STATE PARKS  
**ARCHAEOLOGICAL SITE RECORDATION (PAGE 2 OF 7)**

31. SOIL TYPE <b>Silt Loam</b>	32. LAND USE Cultivated DEFINE "OTHER"	33. CONTOUR ELEVATION (FT/M) <b>570 ft./ 173m</b>
-----------------------------------	---	--

34. LITERATURE SOURCES

35. FEATURES PRESENT (INDICATE ALL THAT APPLY)

**PREHISTORIC**

DEFINE "OTHER"

**HISTORIC**

DEFINE "OTHER"

36. FLORAL / FAUNAL REMAINS	37. HUMAN REMAINS
-----------------------------	-------------------

38. ARTIFACT DESCRIPTIONS

The isolated find consists of a single tertiary Burlington chert flake.

(Attach to paper form or e-mail the following as attachments)

39. ARTIFACT ILLUSTRATIONS

40. SKETCH MAP: Include on the sketch-map the key topographic features such as streams, hills, elevations, houses, and roads. Sketch map must include a scale and north arrow.

41. USGS TOPOGRAPHIC MAP SECTION: Attach a copy of the relevant portion of the USGS 7.5 minute quadrangle where the site location is shown. Please be sure to include a North arrow and write the name of the quadrangle on the map section.

Form last revised on 06/30/05.

**Return completed form to: State Historic Preservation Office, Lewis & Clark State Office Bldg, 1101 Riverside Drive  
PO Box 176, Jefferson City, MO 65102-0176. Office: (573) 751-7858, Fax: (573) 522-6262**

# **Appendix E**





**MISSOURI**  
DEPARTMENT OF  
NATURAL RESOURCES

Michael L. Parson  
Governor

Dru Buntin  
Director

April 5, 2023

Elliott Reed  
Cochran Engineering  
530A East Independence Drive  
Union, MO 63084

Re: **SHPO Project Number: 008-FR-23** – Oldenburg Industrial Park Construction Project, Highway 100, Washington, Franklin County, Missouri (EDA)

Dear Elliott Reed:

Thank you for submitting information to the State Historic Preservation Office (SHPO) regarding the above-referenced project for review pursuant to Section 106 of the National Historic Preservation Act, P.L. 89-665, as amended (NHPA), and the Advisory Council on Historic Preservation's regulation 36 CFR Part 800, which require identification and evaluation of historic properties.

We have reviewed the information regarding the above-referenced project and have included our comments on the following page(s). Please retain this documentation as evidence of consultation with the Missouri SHPO under Section 106 of the NHPA. SHPO concurrence does not complete the Section 106 process as federal agencies will need to conduct consultation with all interested parties. **Please be advised that, if the current project area or scope of work changes, such as a borrow area being added, or cultural materials are encountered during construction, appropriate information must be provided to this office for further review and comment.**

If you have questions please contact the SHPO at (573)751-7858 or call/email Jeffrey Alvey, (573) 751-7862, [jeffrey.alvey@dnr.mo.gov](mailto:jeffrey.alvey@dnr.mo.gov). If additional information is required please submit the information via email to [MOSection106@dnr.mo.gov](mailto:MOSection106@dnr.mo.gov).

Sincerely,

STATE HISTORIC PRESERVATION OFFICE

*Toni M. Prawl*

Toni M. Prawl, PhD  
Director and Deputy  
State Historic Preservation Officer



**SHPO Project Number: 008-FR-23** – Oldenburg Industrial Park Construction Project, Highway 100, Washington, Franklin County, Missouri (EDA)

---

COMMENTS:

We have reviewed the information provided concerning the above referenced project. The potential for unrecorded sites is high as indicated by the topographic location of the proposed project areas and the proximity of previously recorded archaeological sites. We, therefore, recommend that an archaeological survey strategy, with deep testing as deemed appropriate, should be developed in conjunction with a contract archaeologist who meets the Secretary of Interior's Standards for Archaeology. This survey should be conducted of areas to be disturbed by project activities and should be completed prior to the initiation of such activities.

A list of independent archaeological contractors who can perform such services is available through the Missouri Department of Natural Resources at:

[https://mostateparks.com/sites/mostateparks/files/CRM\\_CONSULTANTS.pdf](https://mostateparks.com/sites/mostateparks/files/CRM_CONSULTANTS.pdf)

Please note that any 36 CFR Part 61 qualified archaeologist may perform an archaeological survey. If you choose a contractor not on the list, please be certain to include his or her curriculum vitae in the report. Please provide one (1) PDF copy of the archaeological survey report when it is finished so we may complete the review and comment process. The report should be submitted to [MOSection106@dnr.mo.gov](mailto:MOSection106@dnr.mo.gov) and should be accompanied by SHPO's [Review & Compliance Information Form](#) and the cover sheet (pg. 1) of the [Cultural Resource Investigation Report Form](#).